

PORTABLE LOW LIGHT LEVEL IMAGING DEVICE FMTP1-1, FMTP1-2

FMTP1-1,2 are low light level (LLL) imaging devices that include 2nd generation image intensifier tube and CCD array which are coupled through direct optical contact.

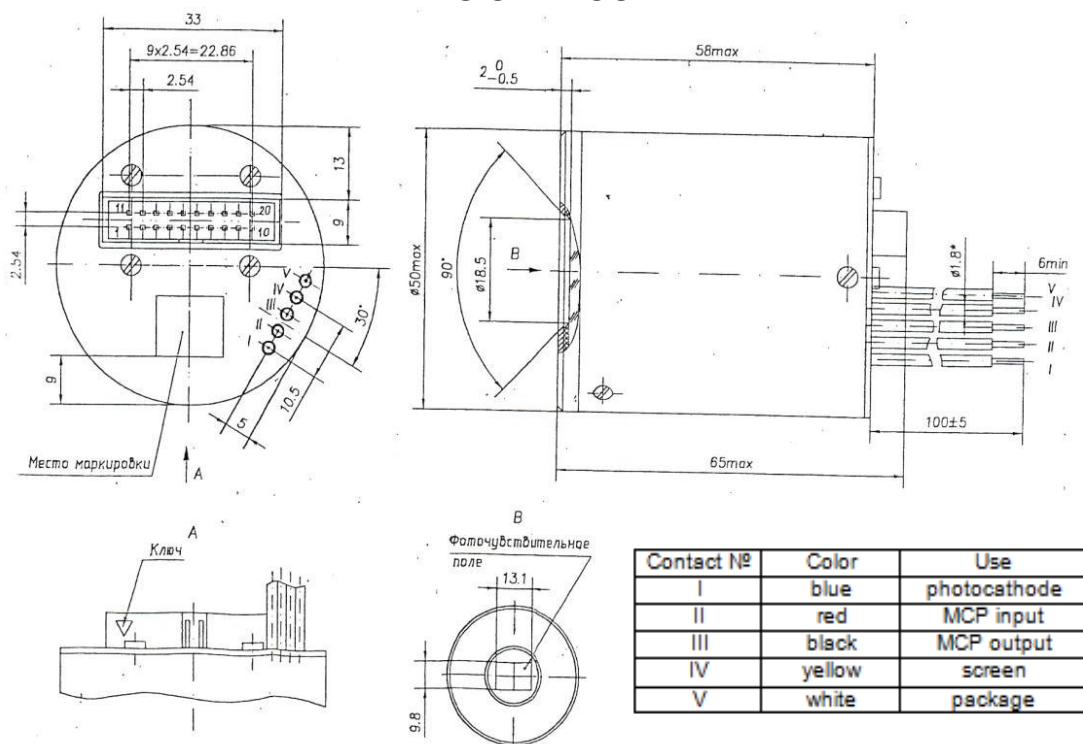
The device is intended for usage in LLL cameras of various applications.



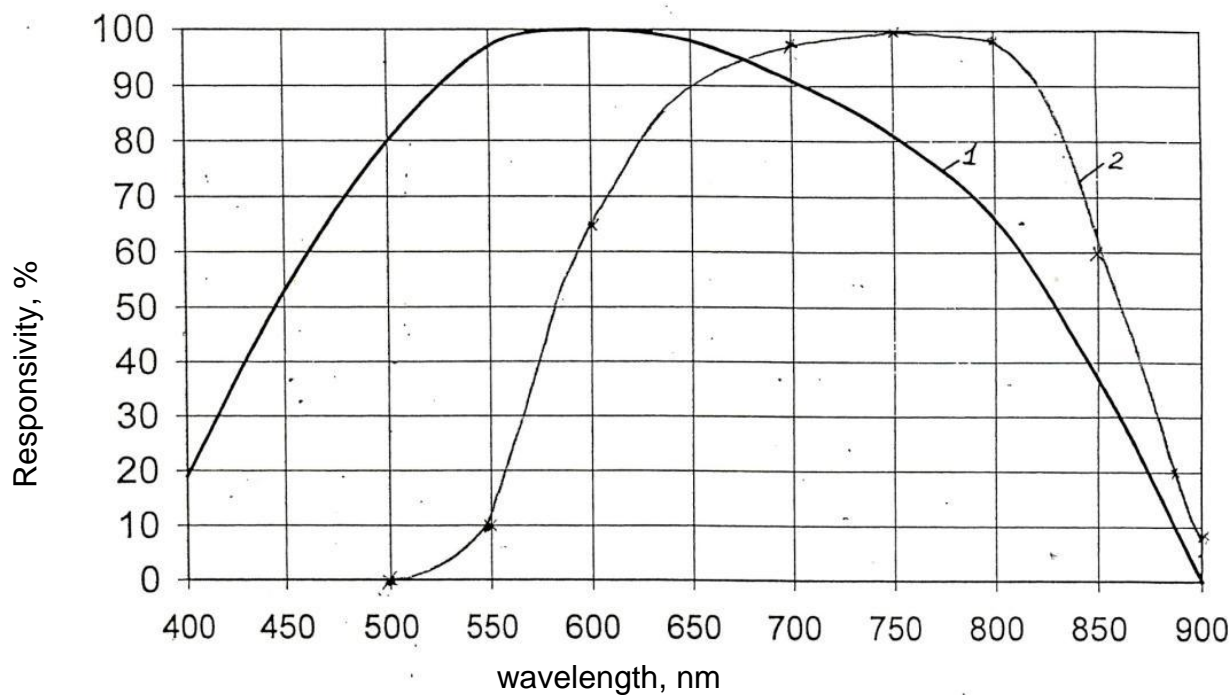
SPECIFICATIONS

Parameters	FMTP1-1	FMTP1-2
Input image size, mm	9.8×13.1	9.8×13.1
Number of pixels	768×580	768×580
Spectral response, nm	400÷850	500÷900
Operation illumination, ≤lx	$2 \cdot 10^{-4}$	$1 \cdot 10^{-4}$
Resolution at operation illumination, TVL	500	500
Threshold illumination at 200 TVL resolution, lx	$2 \cdot 10^{-6}$	$1 \cdot 10^{-6}$
Controlled dynamic range, lx	$10^{-2} \div 2 \cdot 10^{-6}$	$10^{-2} \div 2 \cdot 10^{-6}$
S/N ratio at operation illumination, dB	18	18
Geometric distortion, %	≤0.5	≤0.5
Operation temperature, °C	-40 ÷ +40	-40 ÷ +40

DIMENSIONAL OUTLINE



SPECTRAL RESPONSE CHARACTERISTICS



- 1 – spectral response characteristics for FMTP1-1;
 2 – spectral response characteristics for FMTP1-2.